



# Southern Interior Beetle Action Coalition

## January 2012 Update

### SIBAC Executive and Board of Directors

**Chair:** Rhona Martin,  
Columbia Shuswap Reg. District

**Vice Chair:** Grace McGregor  
Reg. Dist. of Kootenay Boundary

**Treasurer:** Rob Gay,  
Regional District of East Kootenay

**Secretary:** Geri Collins,  
CFof Central Interior First Nations

#### **Members:**

**Eugene Foisy,**  
North Okanagan Regional District

**Scott Blissett,**  
Ktunaxa Nation Council

**;**  
Squamish-Lillooet Reg. District

**Tawnya Durant,**  
Nlaka'pamux Nation Tribal  
Council

**Jim Edgson,**  
Central Okanagan Regional District

**Lennard Joe,**  
Nicola Tribal Association

**Chief Garry John,**  
Lillooet Tribal Council

**Travis Kruger,**  
Okanagan Nation Alliance

**Greg Lay,**  
Reg. District of Central Kootenay

**Angelique Wood,**  
Regional District of Okanagan-  
Similkameen

**Chief Judy Wilson,**  
Shuswap Nation Tribal Council

**;**  
Thompson Nicola Regional District



**sibacs.com**

**Staff:**  
Dalyce Brandt, Administrator

Email: [admin@sibacs.com](mailto:admin@sibacs.com)

*The Southern Interior Beetle Action Coalition (SIBAC) is committed to helping communities understand the probable effects of the mountain pine beetle (MPB) epidemic; and to develop and implement appropriate MPB mitigation measures in the southern interior of BC. A membership based organization; SIBAC represents local and First Nations governments from across the southern interior.*

### Overview:

In October 2009, SIBAC submitted its' final Mountain Pine Beetle (MPB) Assessment and Mitigation Plan to the Province of BC. The plan represented two years of work studying the current and expected impacts of the MPB epidemic in the southern interior on the forest sector, the socio-economic health of communities, the environment and First Nations. The SIBAC final report includes 24 recommendations to assist in mitigating the anticipated impacts of the MPB epidemic. Of these recommendations, SIBAC identified 6 that were an immediate priority. Copies of the Executive Summary and full final report are available on the SIBAC website at [sibacs.com](http://sibacs.com).

The SIBAC Board believed that it was vitally important that the organization continued to provide a coordinated voice for southern interior communities and take an active role in addressing the 6 priority recommendations. In December 2009, the Province of BC provided SIBAC with \$450,000 in funding so that SIBAC could begin to develop and implement projects.

In April 2011, SIBAC received from the Province a cheque for \$3 Million dollars—funding of \$1 Million per year for each of the next three years to support the continued efforts of SIBAC to implement projects that will greatly reduce the impact the MPB epidemic, particularly to communities identified as most at risk.

For the year 2011, the SIBAC Board and staff worked with partner groups and approved \$404,868.00 for 20 projects with a total value of \$2,356,130.00. Projects that will help address these priority issues and recommendations. A brief description of some of the major projects SIBAC supported in 2011 can be viewed on pages 2, 3, 4 and 5.

### **SIBAC – PROJECT FUNDING CRITERIA AND CURRENT INITIATIVES**

To assist in developing and selecting projects for SIBAC support, the Board adopted several funding criteria:

- Strength of Partnership Participation
- Project Sustainability
- Reach of Project
- Regional Inclusion
- Expert Involvement
- Timing of Project

The following pages provide a brief description of some of the major projects SIBAC is currently supporting or developing and some already completed. Please feel free to contact the noted project contact person or Dalyce Brandt, SIBAC Administrator for more information on any of the following projects (e-mail: [admin@sibacs.com](mailto:admin@sibacs.com)).

### **SIBAC 2011 FUNDED PROJECTS:**

#### **A New Direction for Okanagan Falls**

SIBAC is partnering with the Regional District of Okanagan-Similkameen—Electoral Area ‘D’ to create a long term, cohesive and viable economic and tourism development plan and prospectus for Okanagan Falls and the nearby communities of Kaleden, East Skaha, Vaseux Lake, Twin Lakes and Apex. The project will produce an inventory of existing businesses, tourist attractions and facilities in the area, establish a Local Business Improvement Committee, enhance communication materials and networks, organize community consultation meetings and market research analysis. The methodology used will be provided to SIBAC in a template format that can be replicated in other communities.

**Project Contact: John Powell, Regional District of Okanagan Similkameen. Email: [jpowell@rdos.bc.ca](mailto:jpowell@rdos.bc.ca)**

#### **Boundary Communities Regional Chamber of Commerce**

SIBAC is a funding partner to assist with the collaborative efforts of the City of Grand Forks, the City of Greenwood, the Village of Midway, and Regional District of Kootenay Boundary Areas C, D and E to establish a Regional Chamber of Commerce. The Boundary region has been identified as an area most at risk of MPB-related impacts and the Regional Chamber can provide the small business community with the opportunity to diversify from its past dependency on forestry employment. A Business Plan has been developed to guide the process and provide for successful implementation.

**Project Contact: Sarah Winton, Community Futures Boundary. Email: [sarah@boundaryvcf.com](mailto:sarah@boundaryvcf.com)**

#### **Extension and Expansion of the Green Heat Initiative Project**

SIBAC has partnered with the Cariboo-Chilcotin Beetle Action Coalition to contribute funding with other funders to explore biomass energy opportunities. Specifically, the project’s major objectives are to expand knowledge of the potential for biomass energy development and to provide direct free assistance to communities and organizations to assist them in completing feasibility analysis of biomass energy heating projects.

**Project Contact: David Dubious, Project Manager. E-mail: [david@cfquesnel.com](mailto:david@cfquesnel.com)**

#### **Columbia Headwaters Community Forest (CHWCF)**

SIBAC has partnered with Columbia Basin Trust and the Southern Interior Development Initiative Trust to provide funding to CHWCF for efforts to establish and maintain a Community Forest with the Columbia Headwaters region. The proposed boundary of the community forest is within the Invermere Timber Supply Area (TSA) and includes the municipalities of Radium Hot Springs, Invermere and Canal Flats, as well as the Regional District of East Kootenay (areas F and G) governed communities including Faimont, Windermere, Wilmer, Edgewater and Panorama.

**Project Contact: Rick Hoar, Chair CHWCF. E-mail: [rhoar@telus.net](mailto:rhoar@telus.net)**

#### **Southern Okanagan and Similkameen Invasive Plants Project (SOSIPS)**

SIBAC partnered with 11 other agencies to provide funding and in-kind support to the South Okanagan-Similkameen Invasive Plant Society to complete measures that will improve forested habitats, reduce wildfire risk and restore rangeland. SIBAC funds will be directed specifically to the treatment / demonstration and prevention / mitigation of noxious weeds in newly disturbed areas and for the collection of data to be entered in to the provincial Invasive Alien Plant Program database. The project was completed in December 2011.

**Project Contact: Lisa Scott, SOSIPS Coordinator. E-mail: [sosips@shaw.ca](mailto:sosips@shaw.ca)**

#### **Regional Economic Development Strategy for Kicking Horse Country**

SIBAC has partnered to provide Golden Area Initiatives (GIA) with funding to complete a Regional Community Economic Development Assessment, Strategy and Implementation Plan for Kicking Horse Country.

**Project Contact: Laura Archer, GIA Community Economic Development Officer. E-mail: [edo@goldenbritishcolumbia.com](mailto:edo@goldenbritishcolumbia.com)**

#### **Ferguson Creek Run of River Hydropower Project**

SIBAC has provide partnership funding to the Squamish-Lillooet Regional District to complete the Pre-Development Application component of the proposed Ferguson Creek run-of-river hydropower project.

**Project Contract: Kim Needham, Director of Planning and Development, Squamish-Lillooet Regional District. E-mail: [KNeedham@slrd.bc.ca](mailto:KNeedham@slrd.bc.ca)**

### 3 SIBAC January 2012 Update

#### **SIBAC 2011 FUNDED PROJECTS CONTINUED:**

##### **Organic Field Crop Production Education**

SIBAC provide funding to the Organic Farming Institute of British Columbia (OFIBC) to develop and implement an educational program for organic field crop production through an online learning platform and practical learning field excursions to prospective farmers.

**Project Contact: Kevin Klippenstein, Chair, Organic Farming Institute of BC. E-mail: [klippersorganics@nethop.net](mailto:klippersorganics@nethop.net)**

##### **Invest Kootenay Partnership**

SIBAC in partnership with Community Futures Central Kootenay (CFCK), 10 local governments and Columbia Basin Trust provided funding to CFCK to complete a strategic plan for the Invest Kootenay Partnership initiative.

**Project Contact: Carmen Harrison, Manager of Development and Finance, Community Futures Central Kootenay. E-mail: [charrison@futures.bc.ca](mailto:charrison@futures.bc.ca)**

##### **Southeast BC Employment Lands Inventory**

SIBAC provided partnership funding to Community Futures East Kootenay to complete the Southeast BC Employment Lands Inventory Project.

**Project Contact: Rob Gay, General Manager Community Futures East Kootenay. E-mail: [Rob@cfek.ca](mailto:Rob@cfek.ca)**

##### **Thomson Shuswap Food Connections**

SIBAC provided partnership funding to Community Futures Thompson Country to identify specific opportunities to provide more local food supplies to three major public institutional buyers in Kamloops and to complete a feasibility analysis to determine the viability, design, function, and implementation of a commercial production kitchen for the Thompson Shuswap Region.

**Project Contact: Shirley Culver, Community Futures Thompson Country. E-mail: [sculver@communityfutures.net](mailto:sculver@communityfutures.net)**

#### **2011 FUNDED PROJECTS COMPLETED:**

##### **North Thompson Agriplex**

SIBAC partnered with Local Governments, the Southern Interior Development Initiative Trust to provide funding to the North Thompson Fall Fair and Rodeo Association in support of the construction of the North Thompson Agriplex facility—a year round facility that will provide new opportunities to improve economic, environmental, social and cultural capacity of Barriere and its surrounding area.

**Project Contact: Jill Hayward, Representative—North Thompson Fall Fair and Rodeo Association. E-mail: [StarJournal-news@starjournal.net](mailto:StarJournal-news@starjournal.net)**

##### **Wildfire Enhancement Training**

SIBAC partnered with the Provincial Government, 10 Shuswap Bands, Ministry of Forest to provide funding to the Central Interior First Nations to train individuals in transferable skills that focus on emergency management, forest fuel management, employment and entrepreneurial skills to the members of the (10) Shuswap Nation Tribal Council Bands.

**Project Contact: Geri Collins, General Manager Community Futures Development Corporation of Central Interior First Nations. E-mail: [geri@cfdcocifn.com](mailto:geri@cfdcocifn.com)**

##### **Split Rock Sekw'el'was Wild Plant Nursery**

SIBAC provide partnership funding to Cayoose Creek Band in partnership with the Lillooet Naturalist Society for the Split Rock Sekw'el'was Wild Plant Nursery to test the viability of using invasive weeds and bark from Mountain Pine Beetle killed trees to create an alternative potting soil mix to peat moss.

**Project Contact: Kim North, Lillooet Naturalist Society. E-mail: [kimnorth@gmail.com](mailto:kimnorth@gmail.com)**

##### **Coldwater River Watershed Workshop**

SIBAC partnered with Health Canada to provide funding to funding to Coldwater Indian Band to host a workshop to address the issue of the Coldwater River Watershed eco Health and Ecosystem Restoration.

**Project Contact: Scotty Holmes, Workshop Coordinator for Coldwater Indian Band. E-mail: [sholmes@coldwaterband.org](mailto:sholmes@coldwaterband.org)**

##### **Futures Game Training**

SIBAC and the Rural Development Scenario Game Partnership sponsored a two day facilitator training session in Richmond June 7 & 8 with the Futures Game creator David Beurle. There were 18 participants.

**Project Contact: Dalyce Brandt, SIBAC Administrator. E-mail: [admin@sibacs.com](mailto:admin@sibacs.com)**

## 4 SIBAC January 2012 Update

### **2010 PROJECTS IN PROGRESS:**

#### **Bridges – Linking Resources for Community Forests**

SIBAC has partnered with the BC Community Forests Association, the Woodlot License Federation, the Community Futures Development Corporation of the Cariboo, the Cariboo-Chilcotin Beetle Action Coalition, the Omineca Beetle Action Coalition, the University of BC, and the Ministry of Jobs, Tourism and Innovation to fund and implement the “Bridges” project. The project focus is to connect wood fibre from community forests and woodlots with the value added sector in order to open new markets and create new opportunities for these small forest license holders in BC.

**Project Contact:** Larry Stranberg, CFDC of the Cariboo E-mail : [happytrails@cfdccariboo.com](mailto:happytrails@cfdccariboo.com)

#### **Developing a Strategic Framework and Action Plan for the Completion of a Watershed Management Plan for the Kettle River Watershed**

SIBAC has partnered with the Regional District of Kootenay Boundary, the Real Estate Foundation of BC and others to design a strategic framework and action plan for the completion of a comprehensive watershed management plan for the entire Kettle River Watershed.

**Project Contact:** Grace McGregor, Director Regional District of Kootenay Boundary E-Mail [gem9293@gmail.com](mailto:gem9293@gmail.com)

#### **BC Log Home & Timber Frame Building Manufacturers – Business and Market Expansion Initiative.**

SIBAC has partnered with the BC Log Home & Timber Building Industry Association, the Cariboo-Chilcotin Beetle Action Coalition and the Pine Beetle Epidemic Response Branch of the Ministry of Jobs, Tourism and Innovation to identify and implement actions that would help to expand markets for the sector. Market expansion of BC’s Log Home & Timber Frame building sector, would result in more value-added employment in rural communities.

**Project Contact:** Gordon Borgstrom, MPB Epidemic Response Branch, MJTI e-mail [Gordon.Borgstrom@gov.bc.ca](mailto:Gordon.Borgstrom@gov.bc.ca)

#### **Grass-fed Beef: Field to Plate Program**

SIBAC has partnered with the First Nations Agricultural Association, Community Futures Development Corporation of Central Interior First Nations and Western Economic Diversification to create a Grass-Fed Beef Value chain that assists ranchers in the expansion of existing beef operations to create a production and marketing chain that caters to the needs of increasing market demands for fresh, local and chemical-free beef.

**Project Contact:** Trevor Kempthorne, FNALA. Email: [trevor@fnala.com](mailto:trevor@fnala.com)

#### **The Rural BC Project**

SIBAC has partnered with the Omineca Beetle Action Coalition and the Cariboo-Chilcotin Beetle Action Coalition to fund the Rural BC Project. The intent of the project is to increase public awareness of the issues rural BC is facing in a constructive and politically non-partisan manner and to present a convincing case of the resources rural BC needs to meet these challenges. **Project Contact:** Tim Pringle, Project Director. E-mail: [ruralbcproject@shaw.ca](mailto:ruralbcproject@shaw.ca)

#### **City of Kimberley—Watershed Assessment**

SIBAC has provided partnership funding to the City of Kimberley to facilitate the study of hydrologic flows from Kimberley and Lois Creek and combined flows below their confluence (Mark Creek) and develop mitigation options to address the potential flood hazard to the City. A sophisticated watershed modeling system will be used to assess the flood risk due to increased harvesting related to MPB and peak flow events in the upstream watersheds. The information collected will be a valuable example for other communities in the southern interior facing similar risks due to changes in forest hydrology.

**Project Contact:** Michael Fox, City of Kimberley. E-mail: [mfox@city.kimberely.bc.ca](mailto:mfox@city.kimberely.bc.ca)

### **PROJECTS COMPLETED IN 2011:**

#### **Salvage Strategy Viewer Tool**

SIBAC provided funding to the Nicola Similkameen Innovative Forest Society (NSIFS) to upgrade the Mountain Pine Beetle Planning Tools for the Merritt and Lillooet TSA’s.

**Project Contact:** Dan Erickson, CTQ Consultants. E-mail: [DErikson@ctqconsultants.ca](mailto:DErikson@ctqconsultants.ca)

#### **Bio-Energy Feasibility Study**

Nupqu Development Corporation (Nupqu) to assist in funding the biomass availability assessment and related analysis in order to determine the feasibility of developing bio-energy operations in the East Kootenay region.



## SIBAC SPECIAL PROJECT

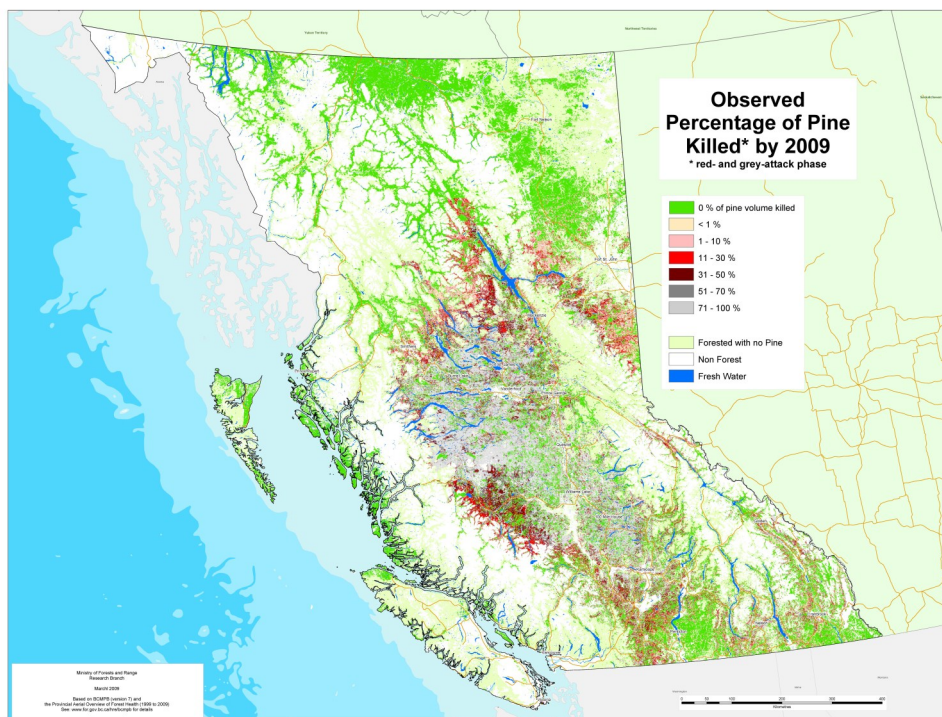
### Green Energy as a Rural Economic Development Tool.

SIBAC has partnered with the other two Beetle Action Coalitions in the province (CCBAC & OBAC) and the Pine Beetle Epidemic Response Branch to develop a new project on Green Energy. The focus of this project is to assist small MPB “at-risk” communities to develop a Green Energy project in their community, and to develop and widely circulate information and resources about Green Energy development and business opportunities.

Funding partners SIBAC, CCBAC, OBAC, Provincial Pine Beetle Epidemic Response Branch and Columbia Basin Trust through application successfully leveraged matching funds from the Federal Rural Secretariat. This is a two year project that will end March 2013.

Project Contact: Gordon Borgstrom, MPB Epidemic Response Branch, MJTI e-mail [Gordon.Borgstrom@gov.bc.ca](mailto:Gordon.Borgstrom@gov.bc.ca)

Project Coordinator: Dalcyce Brandt, SIBAC Administrator. E-mail: [admin@sibacs.com](mailto:admin@sibacs.com)



**Please contact us at:**

Box 3006

Kamloops, BC V2C 6B7

Ph; 250-378-1929

Email: [admin@sibacs.com](mailto:admin@sibacs.com)



**sibacs.com**

